



# City Council Meeting

Park System Updates

November 21, 2017



# Park System Master Plan



# Why a park system plan is important

- Active living needs of the community are changing
  - Planning improves understanding of current needs
  - Planning assists in evaluation of priorities
- Provides a framework and vision for the next 20+ years
  - Allows city resources to be used more efficiently
  - Provides support to seek funds from outside sources

# Principles guiding this planning process

- Design to minimize ongoing maintenance costs
  - Recognize we can't offer every amenity in every park
  - Group higher maintenance items into larger parks
  - Remove high maintenance amenities from smaller parks
- Reduce quantity of lesser used facilities
- Modify / add amenities to better meet current needs
- Promote both active and passive use of the parks

# Planning Process

1. Inventory of Existing Amenities
2. Comparison to National Standards
3. Meetings with Focus Groups / Commission
4. Place Parks into Categories
5. Develop Early Concept Maps of Larger Parks
6. Refine Concept Maps of Larger Parks
7. Create the Park System Master Plan Document



*Public Input Throughout the Planning Process*



# Planning Process

*Dialog with the community has been an important part of the process.  
Materials from past discussions is available below.:*

- [September 13 - MAC Park Public Open House](#)
- [September 6 - Welcome Park Neighborhood Meeting](#)
- [August 9 - Public Open House](#)
- [August 2 - North Lions Neighborhood Meeting](#)
- [July 13 - City Council Work Session](#)
- [July 12 - Bassett Creek Neighborhood Meeting](#)
- [June 7 - Becker Park Neighborhood Meeting](#)
- [April/May - Community Event Posters](#)
- [April 19 - City Council Meeting](#)
- [April 5 - Park & Recreation Commission Meeting](#)
- [March 14 - Public Open House](#)
- [March 14 - MAC Park Public Open Meeting](#)
- [February 15-17 - Focus Group Meetings \(12\)](#)
- [December 1 - Winterfest](#)
- [November, 2016 Project kick-off board](#)
- [June 2, 2016 - Becker Park Visioning](#)

Join the  
Discussion

Contact:  
Crystal Recreation  
763-531-0052  
Email

## *Media Reports on the Master Planning Process*

- [Sun Post 9.13.17](#)
- [CCX Media 9.6.17](#)
- [CCX Media 8.9.17](#)
- [CCX Media 6.26.17](#)
- [CCX Media 6.12.17](#)
- [Sun Post 4.26.17](#)
- [Sun Post 3.22.17](#)
- [CCX Media 3.13.17](#)
- [Sun Post 3.2.17](#)
- [Sun Post 11.22.16](#)



# Recommended Changes to the System

## Improve Existing

- Expand / Improve Disc Golf Area
- Expand / Improve Dog Park

## Increase Quantity

- Full-Sized Rectangle Fields (+4)
- Pickleball Courts (+6)
- Various Sized Picnic Shelters
- Lighting on Large Fields



# Recommended Changes to the System

## New Additions

- Rentable Community Building with Restrooms (+5)
- Destination / Inclusive Play Area
- Outdoor Fitness Equipment
- Water Feature / Fountain (for Play and Aesthetics)
- Gathering Area for Food Truck / Farmer's Market Events
- Outdoor Performance Area / Great Lawn
- Community Ice Skating Rink with Refrigeration





# Recommended Changes to the System

## Reductions

- Baseball Fields (-1)
- Softball Fields (-4)
- Tennis Courts (-1)
- Hockey Rinks (-2)
- Warming House (-8)
- Large Performance Building (-1)



# Assigning Parks to Categories

Review the function of each park in the overall park system

**Natural Area**

(8)

**Little to no development**

**Neighborhood**

(13)

**Small park within a 10-minute walk**

**Community**

(4)

**Large Recreation Facilities**

**Destination**

(2)

**Unique / Signature Community Facilities**

# Natural Areas

*Areas with little to no development*

## Focus is on Open Space

- Trails / Boardwalks
- Benches
- Interpretive Signage
- Community Gardens
- Nature Play Areas



*Dakota County – Whitetail Woods Regional Park*



# Crystal Parks and Recreation

## Natural Areas

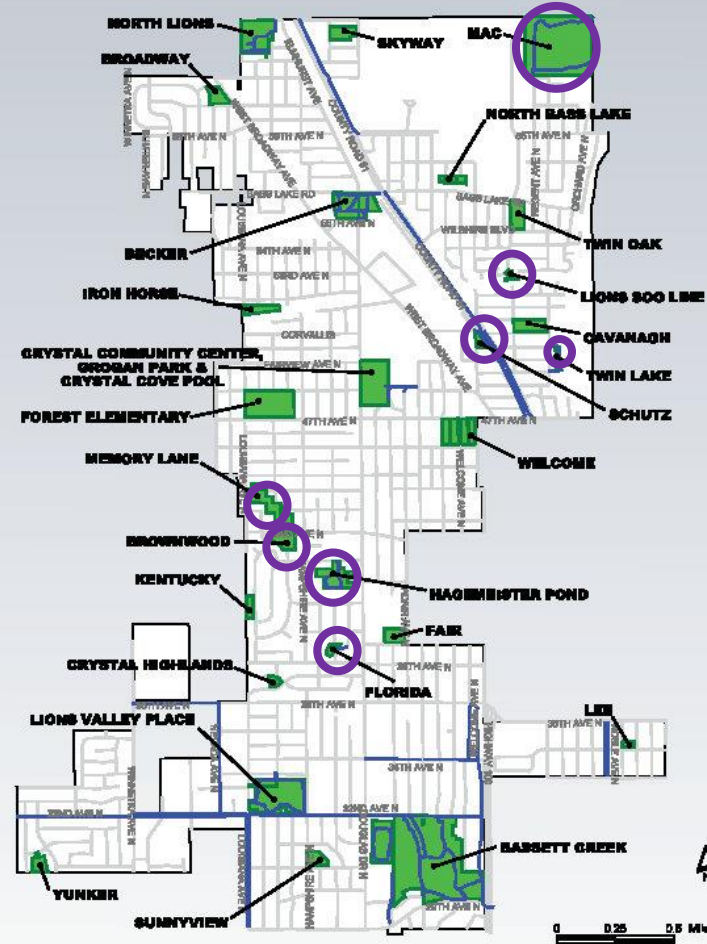
Brownwood  
Florida  
Hagemeister  
MAC Park

Memory Lane  
Soo Line  
Schutz  
Twin Lake Shores



# Crystal City Park Map

The City of Crystal has more than 240 acres dedicated to parks and open space. The city maintains 27 parks as well as numerous ball fields, courts, playgrounds, trails and activity areas.



Crystal City Parks are open daily from sunrise to 10 p.m. Please follow all regulations when visiting the parks:

- Dispose of all debris and litter in trash cans.
- Picnic fires are prohibited except in designated areas.
- Do not damage or harm park wildlife or plantlife.
- Dogs must be leashed with a leash shorter than 6 feet.
- Beer and liquor is prohibited except by permit.
- Do not damage or deface park property.
- No skating on tennis courts or playground equipment.
- Dog walkers must possess waste removing utensils.

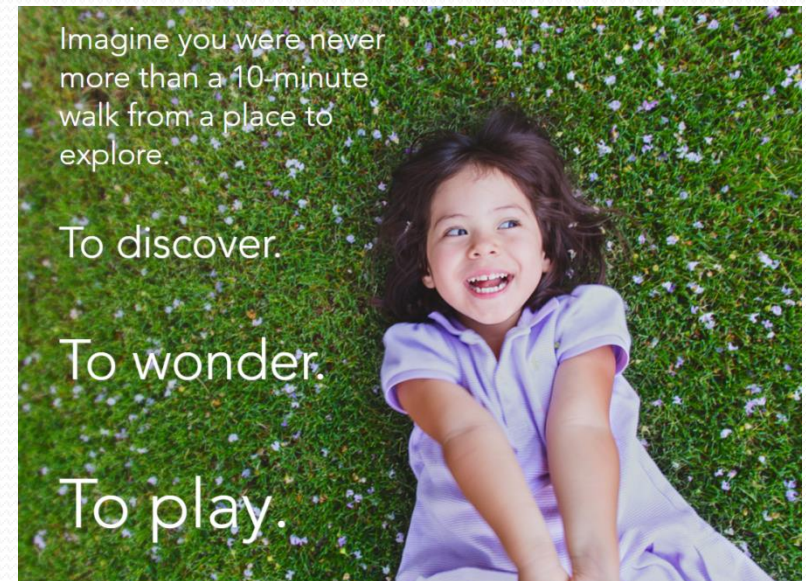
For a complete list of regulations, visit [www.crystalmn.gov/recreation/index.php](http://www.crystalmn.gov/recreation/index.php), and click on Park Regulations.

# Neighborhood Parks

*Small Park within a 10-minute walk*

## Focus is on neighborhoods

- Easy to walk to
- Play area in each park
- Open grass area
- Paved court for various games
- Picnic tables and benches
- Small picnic shelter in some



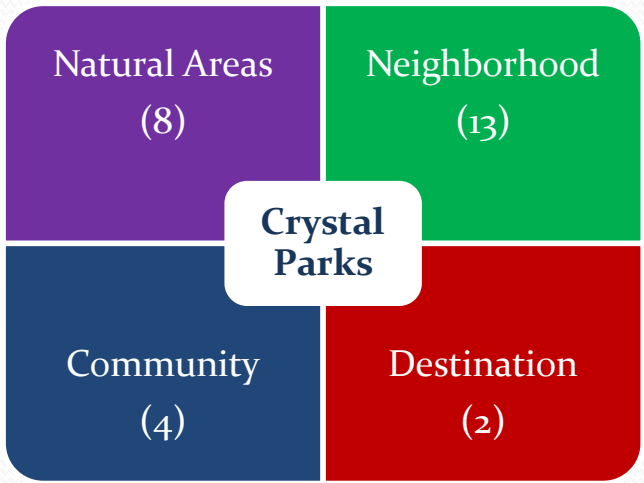
*Trust for Public Land*



# Crystal Parks and Recreation

## Neighborhood

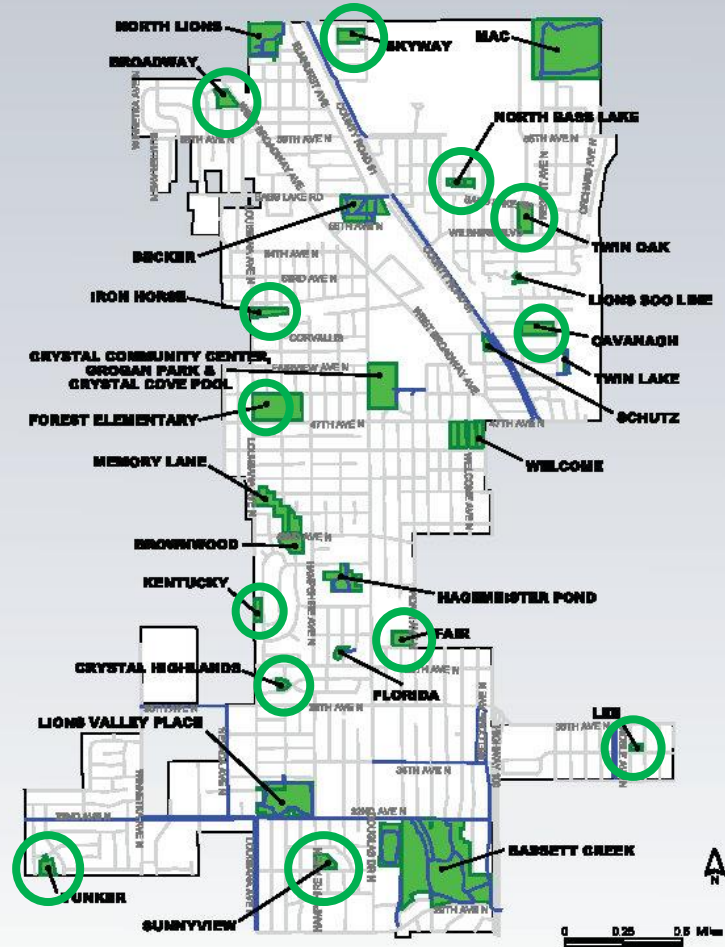
- Skyway
- Broadway
- North Bass Lake
- Twin Oak
- Iron Horse
- Cavanagh
- Forest
- Kentucky
- Fair
- Crystal Highlands
- Lee
- Yunkers
- Sunnyview



**Crystal Parks**

# Crystal City Park Map

The City of Crystal has more than 240 acres dedicated to parks and open space. The city maintains 27 parks as well as numerous ball fields, courts, playgrounds, trails and activity areas.



Crystal City Parks are open daily from sunrise to 10 p.m. Please follow all regulations when visiting the parks:

- Dispose of all debris and litter in trash cans.
- Picnic fires are prohibited except in designated areas.
- Do not damage or harm park wildlife or plantlife.
- Dogs must be leashed with a leash shorter than 6 feet.
- Beer and liquor is prohibited except by permit.
- Do not damage or deface park property.
- No skating on tennis courts or playground equipment.
- Dog walkers must possess waste removing utensils.

For a complete list of regulations, visit [www.crystalmn.gov/recreation/index.php](http://www.crystalmn.gov/recreation/index.php), and click on Park Regulations.

# Community Parks

*Large Recreation Facilities with Parking Lots*

**Focus is on sports and community-level amenities**

- Full-sized fields
- Full-sized court sports
- Lights on ball fields and courts
- Hockey rinks / sliding hills
- Restroom building / rental space
- Picnic shelters / sand volleyball / disc golf / dog park



*Valley Place Park – City of Crystal*



# Crystal Parks and Recreation Community

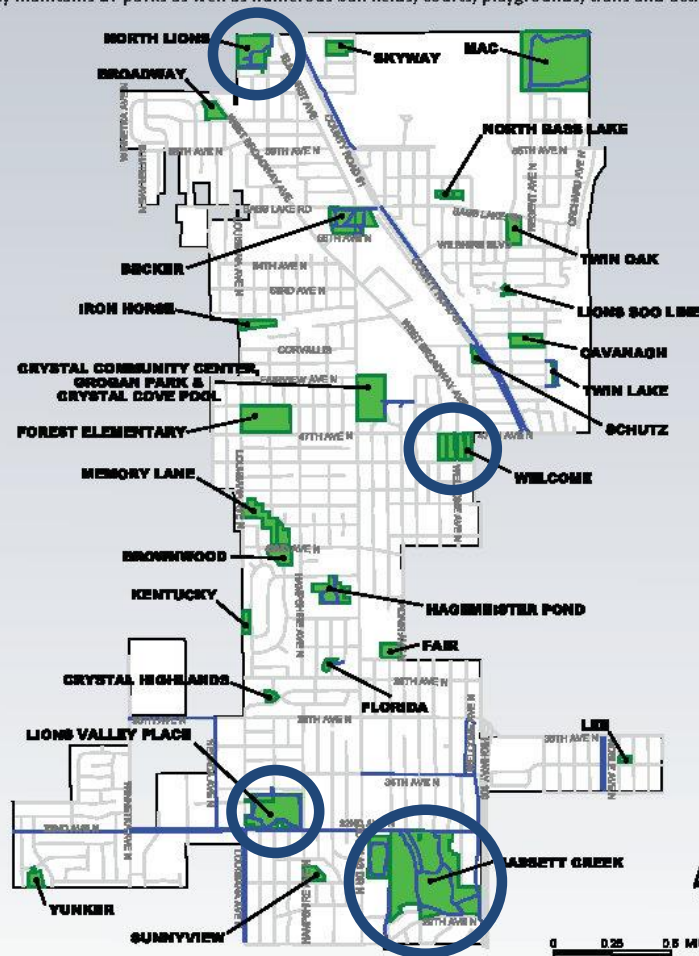
North Lions  
Welcome

Lions Valley Place  
Bassett Creek



## Crystal City Park Map

The City of Crystal has more than 240 acres dedicated to parks and open space. The city maintains 27 parks as well as numerous ball fields, courts, playgrounds, trails and activity areas.



Crystal City Parks are open daily from sunrise to 10 p.m. Please follow all regulations when visiting the parks:

- Dispose of all debris and litter in trash cans.
- Picnic fires are prohibited except in designated areas.
- Do not damage or harm park wildlife or plantlife.
- Dogs must be leashed with a leash shorter than 6 feet.
- Beer and liquor is prohibited except by permit.
- Do not damage or deface park property.
- No skating on tennis courts or playground equipment.
- Dog walkers must possess waste removing utensils.

For a complete list of regulations, visit [www.crystalmn.gov/recreation/index.php](http://www.crystalmn.gov/recreation/index.php), and click on Park Regulations.



# Destination Parks

*Unique or Signature Gathering Spaces*

**Focus is on year-round community activities**

- Inclusive Play Area
- Water Feature / Fountain
- Ice Surface / Plaza Space
- Flexible Performance Area
- Community Center
- Aquatic Center



*Madison's Place in Woodbury – Landscape Structures Design*



# Crystal Parks and Recreation

## Destination

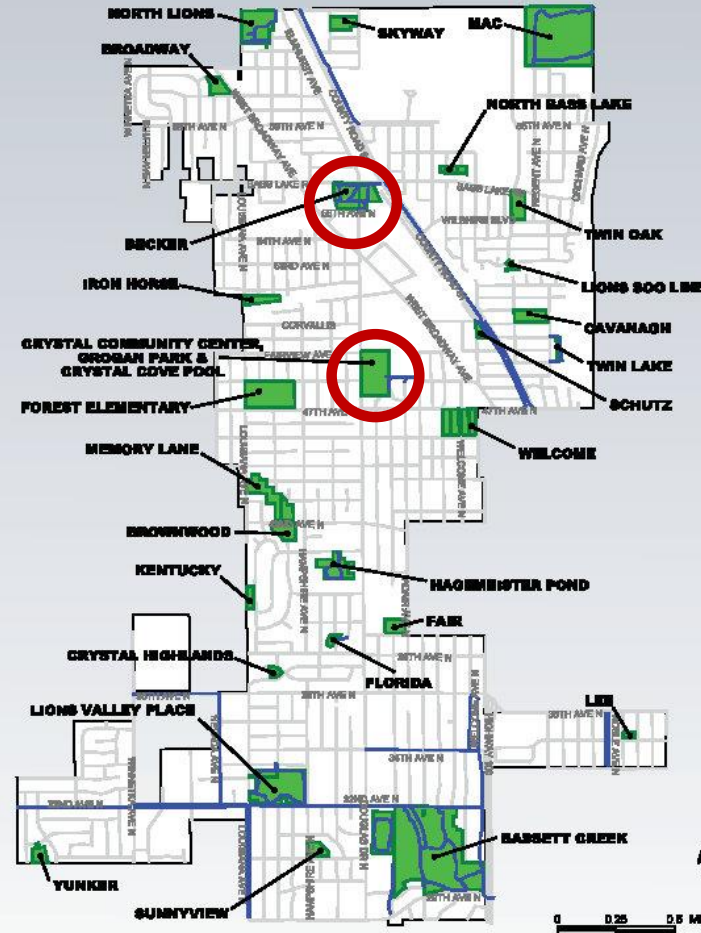
Becker Park

Grogan Park



# Crystal City Park Map

The City of Crystal has more than 240 acres dedicated to parks and open space. The city maintains 27 parks as well as numerous ball fields, courts, playgrounds, trails and activity areas.



Crystal City Parks are open daily from sunrise to 10 p.m. Please follow all regulations when visiting the parks:

- Dispose of all debris and litter in trash cans.
- Picnic fires are prohibited except in designated areas.
- Do not damage or harm park wildlife or plant life.
- Dogs must be leashed with a leash shorter than 6 feet.
- Beer and liquor is prohibited except by permit.
- Do not damage or deface park property.
- No skating on tennis courts or playground equipment.
- Dog walkers must possess waste removing utensils.

For a complete list of regulations, visit [www.crystalmn.gov/recreation/index.php](http://www.crystalmn.gov/recreation/index.php), and click on Park Regulations.



# Assigning Amenities Within Each Category

Primarily for Community and Destination Parks

**Natural Area**

(8)

**Little to no development**

**Neighborhood**

(13)

**Small park within a 10-minute walk**

**Community**

(4)

**Large Recreation Facilities**

**Destination**

(2)

**Unique / Signature Community Facilities**



# Location of Community Park Amenities

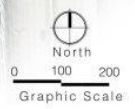
Sports Fields and Amenities	Bassett Creek	North Lions	Valley Place	Welcome
Baseball w/ Fence	1			
Basketball	1	1	1	1
Hockey Rink		1	2	1
Pickleball		6		
Rectangle - full	2	1		1
Restroom / Rental Bldg.	1	1	1	1
Softball w/ Fence			1	1
Sliding Hill		1	1	
Tennis			6	

# Bassett Creek Park



- BALLFIELD IMPROVEMENTS**
- Includes lighting
  - Access and spectator improvements
- PARK BUILDING**
- Restrooms
  - Concession area
  - Picnic shelter
  - Multipurpose room
  - Seating areas
- PLAY AREA**
- Existing play equipment
  - New play equipment
- DOUBLE MULTI-PURPOSE FIELD (SOCCER/LACROSSE/FOOTBALL)**
- 380' x 540'
  - Accommodates two full size fields (360' x 225')
- PICNIC SHELTER**
- SAND VOLLEYBALL**

- EXISTING POND**
- Overlook areas
  - Fishing opportunity
  - Improve shoreline vegetation
- DISC GOLF COURSE**
- Mowed fairways
  - Native prairie roughs
  - 18 Holes



# North Lions Park



# Valley Place Park



Louisiana Ave N

Homshire Ave N

32nd Ave N

**VALLEY PLACE PARK**  
Master Plan  
Crestle Meadows  
06/06/2017 | 91788-080

North  
0 40 80  
Graphic Scale



# Welcome Park







# Location of Destination Park Amenities

Community Gathering Spaces	Becker Park	Grogan Park
Aquatic Center		1
Community Center		1
Community Events	1	1
Food Truck / Farmer's Market	1	
Ice Skating	1	
Inclusive Play Area	1	
Restroom / Rental Bldg.	1	1
Little League Complex		1
Outdoor Performance / Great Lawn	1	
Water Feature / Fountain	1	

# Becker Park





# Final Steps for Plan Document

- Park and Recreation Commission Recommendation
- City Council Adoption

## Note:

- Final priorities set during budget process
- Final costs are determined during final design / bidding